

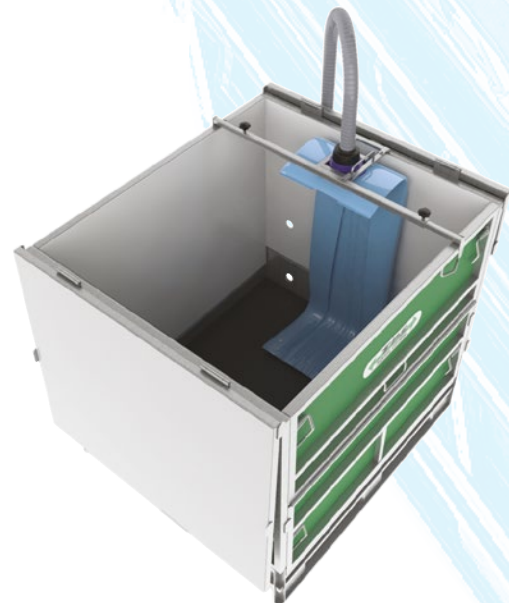
# TPS Autofill®

The TPS Autofill® Liquid Liner System is designed for the hygienic handling, storage and transportation of liquid products.



One of the advantages of Autofill® is that it unfolds all by itself during the filling operation. The Autofill liner is stocked in polyethylene (PE) as standard. Due to the folding of the Autofill liner, a frontal filling retainer must always be used during filling.

For mounting and operating instructions see the product information data sheet.



[www.tpsrentalsystems-us.com](http://www.tpsrentalsystems-us.com)

MAKING SUPPLY CHAIN LOGISTICS AS EASY AS IBC

To see the full range of TPS IBC-related supplies  
email: [info@tpsrentalsystems-us.com](mailto:info@tpsrentalsystems-us.com)  
or visit the TPS web site

# TPS Autofill®

## Mounting and Operating Procedure

### Before you start:

- Use only with front filling and discharging containers
- Begin by folding down the container wall (side 1) for access.
- The outer liner sleeve MUST NOT be removed prior to filling.

### To install the Liner into the container:

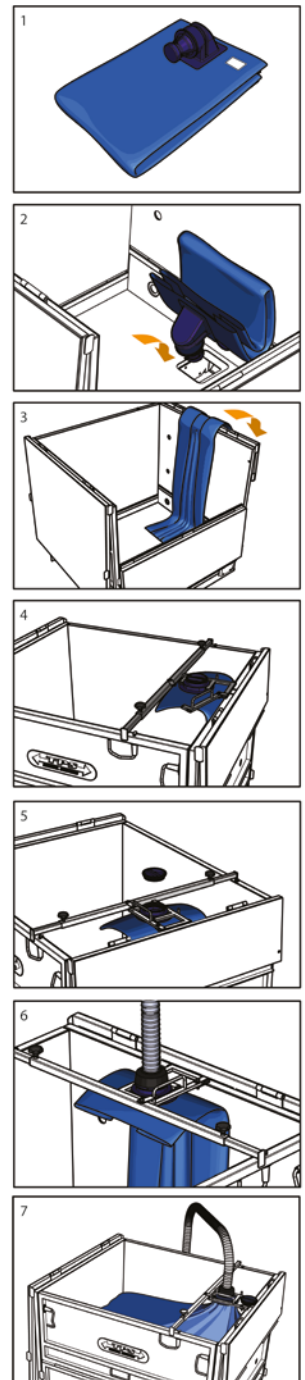
- 2 Insert the discharge valve of the liner vertically down into the square discharge hole, guiding it until the valve faces out through the discharge hole at the edge of the container.
- 3 Hang the Autofill® liner over the container's front wall, (side 4) then close and lock the open half from the side #1 back into the upright position.
- 4 Place the filling bridge on top of the container. Adjust and fit the slide arms on to the two opposing sides of the container top. Tighten the thumbscrews. Place the liner filling flange into the filling bridge, and lock into position.
- 5 Remove the flange's cap for filling. We recommend this closed system when filling Autofill®, for optimum hygiene.

### To fill the liner:

- 6 When starting to fill, it is important that the product is forced down to the bottom of the inner liner, to avoid accumulation of product underneath the filling flange or at the rear of the container.
- 7 It is recommended to stretch the rear flap prior to filling, until it starts to fill with product to around 50 to 100 litres. (The top overhang inside the container folds around the bridge arm).

### When the liner is full:

- After the container is full, replace the cap firmly and then remove the filling bridge and the outer sleeve from the liner.
- Fold the corners and excess of liner within the walls, and close the container's top.
- Prior to discharging the container, fit the wringer to the container, attach the liner and wind the handle for a complete discharge.



[www.tpsrentalsystems.com](http://www.tpsrentalsystems.com)

MAKING SUPPLY CHAIN LOGISTICS AS EASY AS IBC